

# MATRIX



## Matrix IC3

model no.:  
IC-MXIC3B-01

Manufactured by:  
Indoorcycling Group GmbH  
Happurger Str. 86  
90482 Nuremberg | Germany  
[www.indoorcycling.com](http://www.indoorcycling.com)  
[info@indoorcycling.com](mailto:info@indoorcycling.com)

### MATRIX Fitness Systems Corp.

1610 Landmark Drive  
Cottage Grove, WI 53527  
Toll-free: 866.693.4863  
Local: 608.839.8686  
[www.matrixfitness.com](http://www.matrixfitness.com)

### CAUTION !

Read all precautions and instructions in this manual before using this equipment. Keep this manual for future reference.

**Improper assembly, maintenance or use can void the warranty terms.**

ENG ESP

# MATRIX

## TABLE OF CONTENTS

Important precautions	page 3
Before you begin	page 4
How to assemble the Matrix IC3 Indoor Cycle	page 5-7
How to operate	page 12
Initial install checks	page 8
How to adjust the Matrix IC3 Indoor Cycle	page 9-11
Resistance adjustment	page 12
How to move the Matrix IC3 Indoor Cycle	page 12
Preventative maintenance	page 13
Daily maintenance	page 13
Weekly maintenance	page 13
Bi-Weekly maintenance	page 14-15
Monthly maintenance	page 15-16
Maintenance activity plan & check lists	page 17-18
Exploded drawings of structural components	page 19-23
Spare part reference list	page 24-28
Limited warranty	page 29

### Technical specifications:

The Matrix IC3 Bike is, according to EN 957, a Class S product for professional and / or commercial use. Such training equipment is intended for use in training areas of organizations such as fitness clubs or sport associations, where access and control are specifically regulated by the individual with legal responsibility.

Foot print:	52 x 120 cm / 20.5 x 47.2 inch
Weight of bike:	57kg / 126,66 lbs
Max saddle height:	115 cm / 45.3 in
Max handlebar height:	115 cm / 45.3 in
Max user weight:	130 kg / 287 lbs

The bike is designed to accommodate most users from 150 to 205 cm / 59.1 to 81.7 in in body height.

# MATRIX

## IMPORTANT PRECAUTIONS

### WARNING!

To reduce the risk of serious injury, read the following important precautions and information before operating the Matrix IC3 Indoor Cycle.

1. It is the responsibility of the owner to ensure that all users of the Matrix IC3 Indoor Cycle are informed of all warnings and precautions.
2. Operate and maintain the Matrix IC3 Indoor Cycle only as described in this manual.
3. Do not operate the Matrix IC3 Indoor Cycle until it is properly assembled (see page 5-7).
4. Keep the bike indoors, away from moisture and dust. Do not place the Matrix IC3 Indoor Cycle in a garage or covered patio or near water.
5. Place the Matrix IC3 Indoor Cycle on a level surface. To protect the floor or carpet from damage, place a mat beneath the Matrix IC3 Indoor Cycle. Make sure that there is adequate room around the Matrix IC3 Indoor Cycle to mount, dismount, and operate it.
6. Regularly inspect and properly tighten all parts of the Matrix IC3 Indoor Cycle as recommended in this manual. Please replace defective parts immediately, and do not use the bike until repair is performed. Use only original parts from the manufacturer.
7. Children under the age of 14 should only be allowed use of the Matrix IC3 Indoor Cycle with parental consent and guidance by a specially trained instructor.
8. The Matrix IC3 Indoor Cycle should not be used by persons weighing more than 290 pounds (130 kg).
9. Always wear appropriate athletic attire and shoes while operating the Matrix IC3 Indoor Cycle. Do not wear loose clothing that could become caught on the Matrix IC3 Indoor Cycle or shoes with loose laces.
10. Before using the Matrix IC3 Indoor Cycle, make sure that you are familiar with the operation of the Indoor Cycle (see pages 8-12).
11. The Matrix IC3 Indoor Cycle does not have an independently moving flywheel (wheel); the pedals will continue to move with the flywheel until the flywheel stops.
12. Always adjust the flywheel resistance so that your pedaling motion is controlled (see page 12).
13. Keep your back straight while using the Matrix IC3 Indoor Cycle; do not arch your back.
14. If you feel pain or dizziness while exercising, stop immediately, rest and cool down.
15. If replacement parts are needed, use only manufacturer-supplied parts.

### WARNING:

Before beginning any exercise program, consult your physician. This is especially important for persons over the age of 35 or persons with pre-existing health problems. Read all instructions prior to use. Be aware that incorrect or extensive training can result in serious health injuries. The manufacturer assumes no responsibility for personal injury or property damage sustained by or through the use of this product.

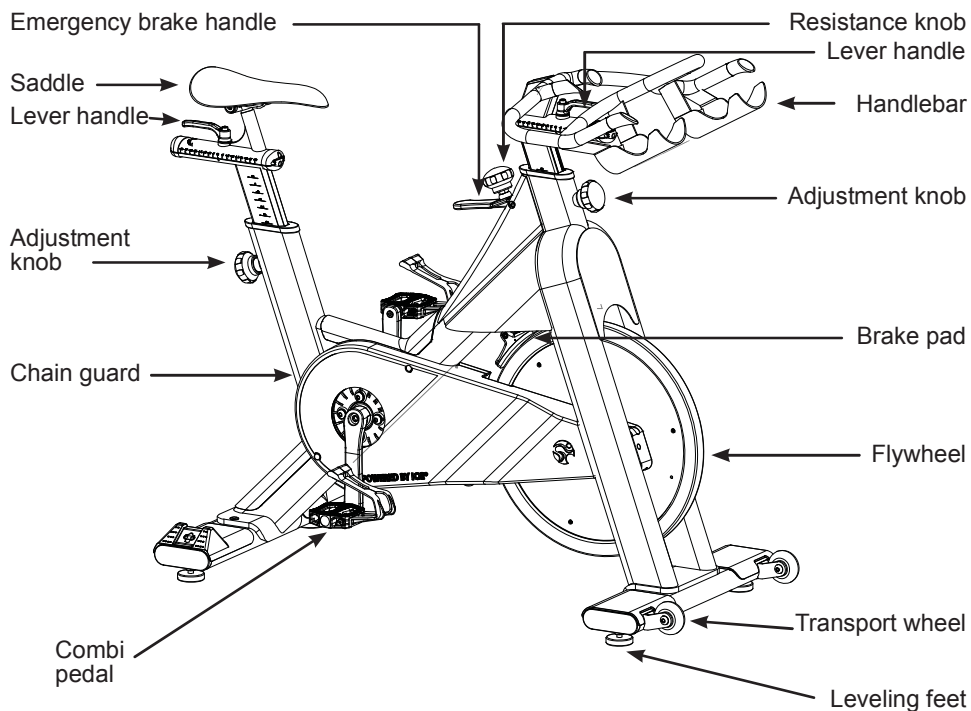
# MATRIX

## BEFORE YOU BEGIN

Dear Customer,  
Congratulations on selecting the Matrix IC3 Indoor Cycle.  
The Matrix IC3 Indoor Cycle offers an impressive array of features designed to enhance cardiovascular fitness, tone muscles, and develop endurance. Whether users are beginners or experienced athletes, the Matrix IC3 Indoor Cycle offers workouts that will help users to reach their individual fitness goals.

**IMPORTANT: Read this manual carefully before assembling or using the Matrix IC3 Indoor Cycle.**

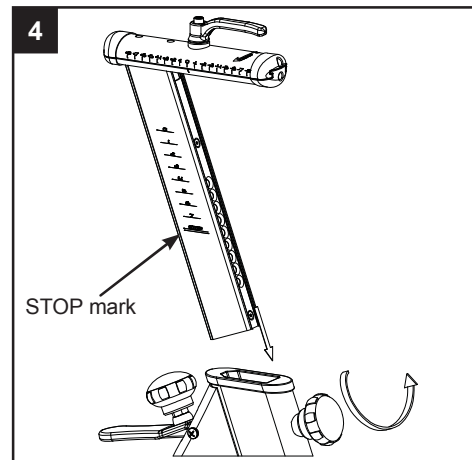
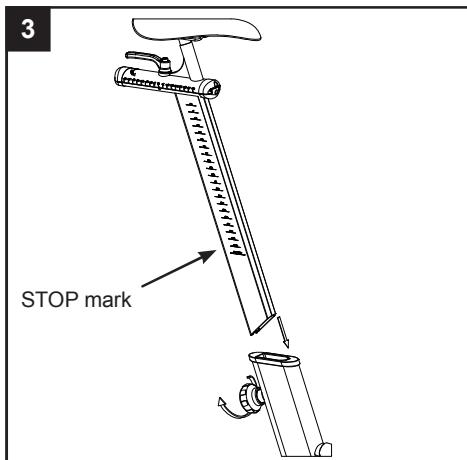
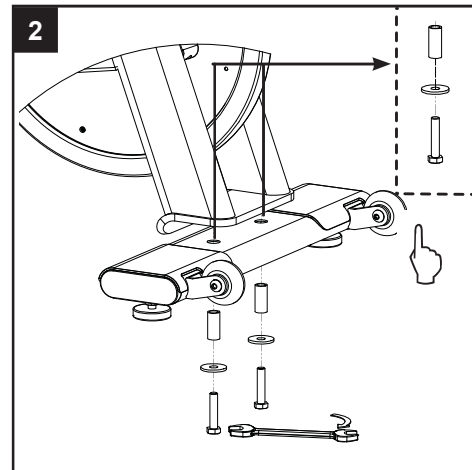
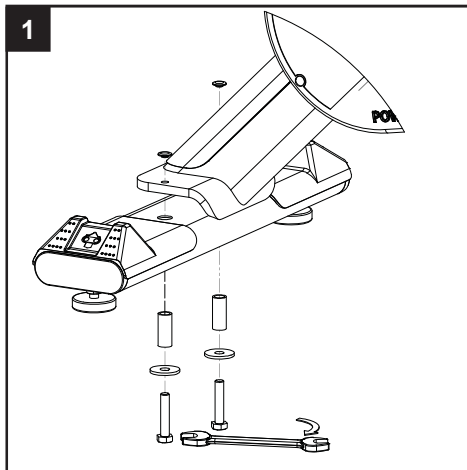
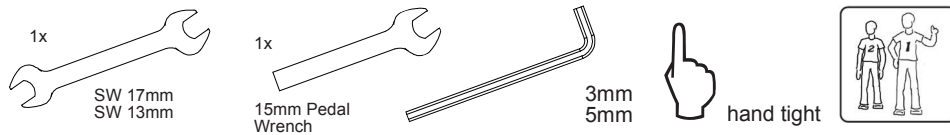
If you have questions after reading this manual, please contact Indoorcycling Group GmbH or visit the website [www.indoorcycling.com](http://www.indoorcycling.com). Before reading further, please familiarize yourself with the parts that are labeled in the drawing below.



You will find the production code on the lower left side of the Matrix IC3 Indoor Cycle frame. Please refer to this number in servicing and maintenance lists.

# MATRIX

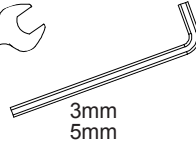
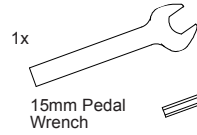
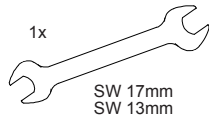
## HOW TO ASSEMBLE Matrix IC3 Indoor Cycle



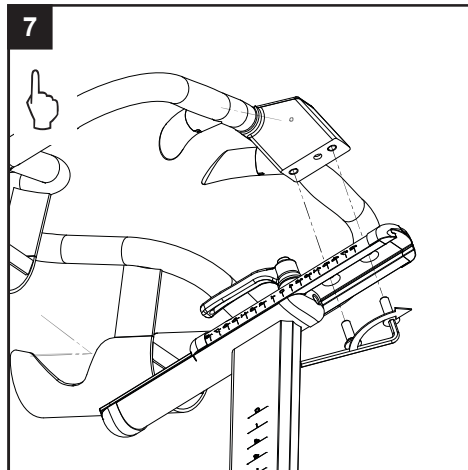
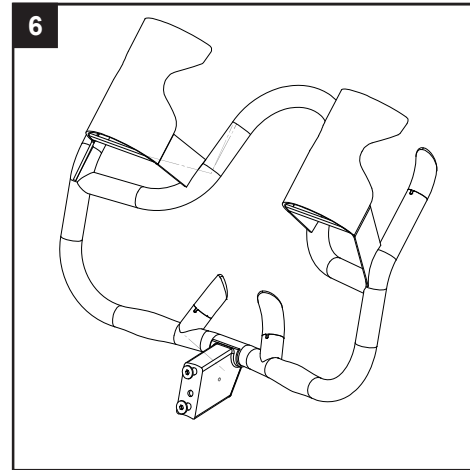
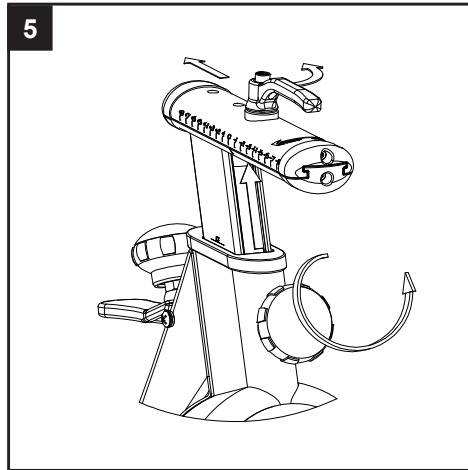
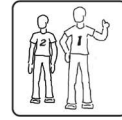
Please assure that nuts are tightened with significant force to minimize loosening during use.  
Seat clamp must be tightened securely from both sides to minimize loosening during use.

# MATRIX

## HOW TO ASSEMBLE Matrix IC3 Indoor Cycle

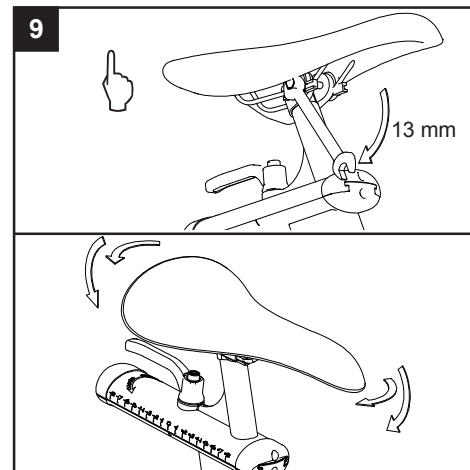
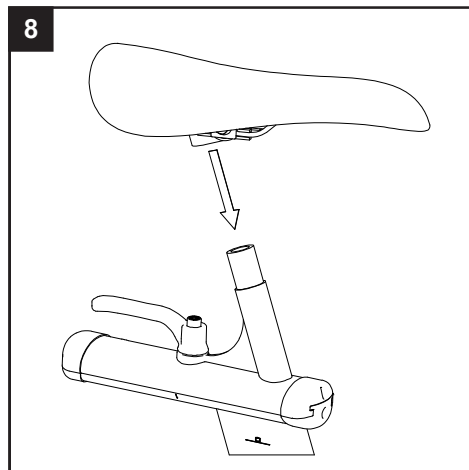
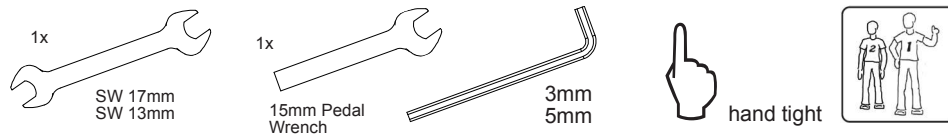


hand tight

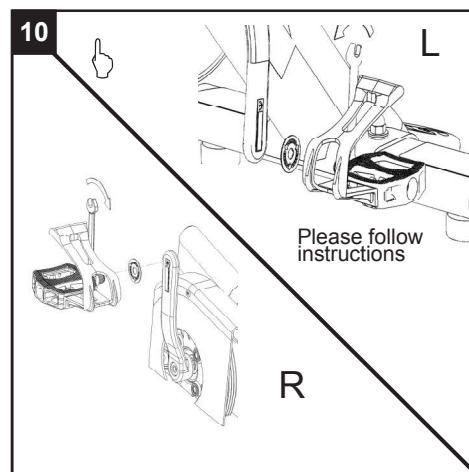


# MATRIX

## HOW TO ASSEMBLE Matrix IC3 Indoor Cycle



Make sure the seat is fixed in a **LEVEL HORIZONTAL AND VERTICAL** position.  
Seat clamp must be tightened securely from both sides to minimize loosening during use.



Pedal marked R installed on right crank (clockwise), Pedal marked L installed on left crank (counterclockwise).

Pedals must be fastened with significant force to avoid loosening with use of the indoor cycle.

ENG ESP

# MATRIX

## INITIAL INSTALL CHECKS

The cycle tune-up must be performed at initial installation of the indoor cycle for optimal performance and longevity. Please read and follow all instructions below. If the indoor cycle is not installed and tuned as described, components may wear excessively and the indoor cycle may become damaged. If you have questions about the installation, please contact matrix customer service [www.matrixfitness.com](http://www.matrixfitness.com)

**Note: Some maintenance procedures require acid-, silicone- and solvent-free spray lubricant** (for example, BRUNOX) **and white lithium grease.**

1. Make sure that the indoor cycle is level. If the indoor cycle rocks on the floor, turn the leveling feet underneath the front and/or rear stabilizer until the rocking motion is eliminated.
2. Verify emergency brake function to assure that emergency brake functions correctly.
3. Brake pad calibration: Turn resistance knob counterclockwise as far as possible (minimum braking effect). Verify that there is a slight separation of the brake pad from flywheel. Brake pad should barely touch the flywheel when resistance knob is turned counterclockwise as far as it can go.
4. Apply spray lubricant to the brake pad using the lubrication holes on the plastic part or the brake pad and externally on the felt pad. Make sure brake pad is thoroughly soaked from end to end with lubricant spray. Wipe the excess from the flywheel.  
\* Best Practice: Use a refillable spray bottle filled with non-aerosol **acid-, silicone- and solvent-free** spray lubricant purchased by the gallon (3.7 L) at the local hardware store.
5. Apply Lithium grease to the threads on the lower end of the brake rod. First, turn the resistance knob clockwise until it stops. Apply a small amount of white lithium grease to the threads on the brake rod above the two lock nuts. Then, turn the resistance knob counterclockwise until it stops.
6. Apply Lithium grease on the metal threads of all the adjustment knobs.
7. Check four (4) Allen bolts on RS pulley for tightness. If loose, apply LocTite Threadlocker Blue-242 and retighten.
8. Verify R and L crank arm Allen bolts for tightness. If loose, apply LocTite Threadlocker Blue-242 and retighten.
9. Wipe down bike frame with rag moistened with solvent-free spray lubricant
10. Some parts of the indoor cycle may become loose during shipment. Check crank arms and check all exposed screws, bolts and nuts, and make sure that they are properly tightened.

### Customer Service

1. Provide basic maintenance instructions for clients and direct them to detailed maintenance instructions (page 13-18).
2. Provide sign-off sheet for clients to confirm explanation of maintenance procedures/manual and verification of condition of bikes.



# MATRIX

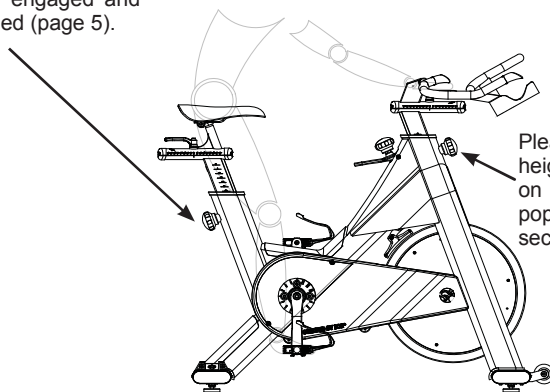
## HOW TO ADJUST THE Matrix IC3 Indoor Cycle

The Matrix IC3 Indoor Cycle can be adjusted for maximum comfort and exercise effectiveness. The instructions below describe one approach to adjusting the Matrix IC3 Indoor Cycle to ensure optimal user comfort and ideal body positioning. You may choose to adjust the Matrix IC3 Indoor Cycle differently.

### Pedal strap adjustment:

Sit on the saddle and position your feet on the pedals, with the balls of your feet directly above the spindles of the pedals (see the drawing below). Adjust the pedal straps so the toe clips (cages) are snug but not too tight. Note: When fitting a bike with combi-pedals, the pedals feature toe clips on one surface and SPD cleats on the opposite surface. If desired, use the SPD cleats with cycling shoes instead of the toe clips.

Please do not adjust saddle height beyond the STOP mark on the stem. Also ensure the pop pin is fully engaged and securely tightened (page 5).



Please do not adjust saddle height beyond the STOP mark on the stem and ensure the pop pin is fully engaged and securely tightened (page 5).

**Please avoid overtightening the pop pin adjustment knob as this may cause damage to the vertical aluminum stems.**

### Saddle height adjustment:

Sit on the saddle and slowly pedal until the right pedal is in the lowest position. Your knees should be slightly bent with no dropping of the hips.

**To avoid hyperextending your knees, make sure that your legs are not completely straight.**

ENG ESP

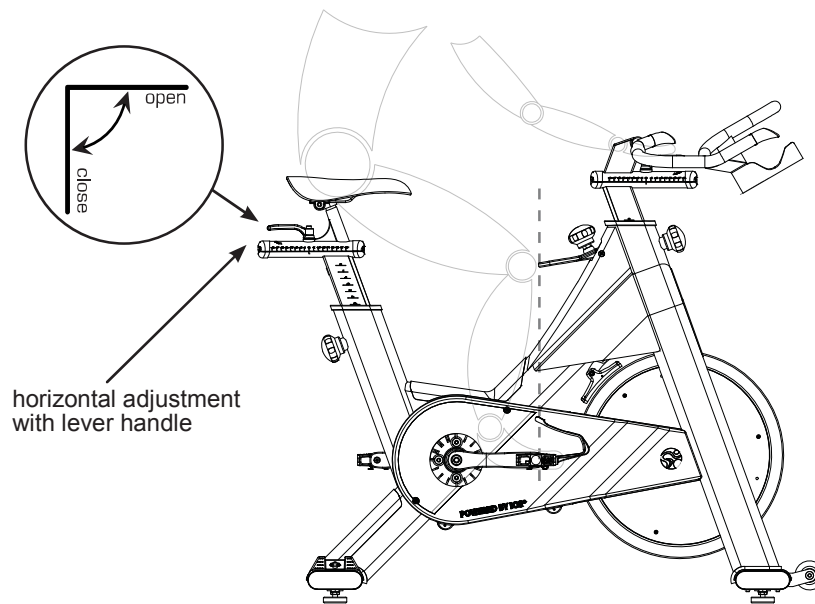
# MATRIX

## HOW TO ADJUST THE Matrix IC3 Indoor Cycle

### Saddle horizontal adjustment:

Proper horizontal adjustment of the saddle is very important in avoiding injury to the knees. Sit on the saddle and move the pedals until the crank arms are in horizontal position.

Using your forward leg as a marker, your kneecap should be directly above the center of the pedal so that a straight line is created between knee and center of the pedal (see the dotted line in image below). To adjust the horizontal position of the saddle, first dismount the Matrix IC3 Indoor Cycle. Next, loosen the rear lever handle, slide the saddle forward or backward as required, and then retighten the lever handle.



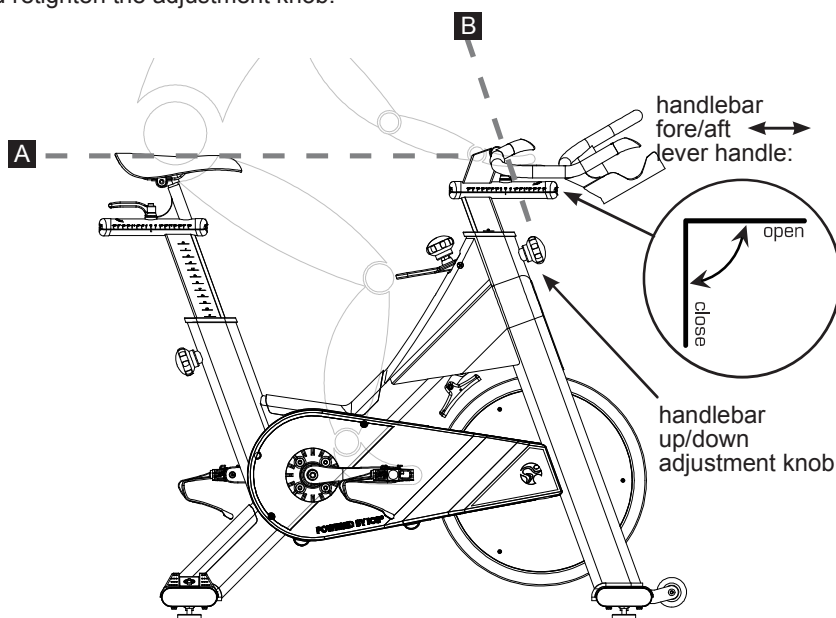
# MATRIX

## HOW TO ADJUST THE Matrix IC3 Indoor Cycle

### Handlebar adjustment:

Begin with the top of the handlebar at relatively the same height as, or just slightly higher than, the top of the saddle (**dotted horizontal line A in the drawing below**) and at a neutral fore/aft position (**see dotted vertical line B in drawing below**). If your knees touch the handlebars, or if you experience back discomfort while pedaling for extended periods of time, the height of the handlebars can be adjusted. First, dismount the Matrix IC3 Indoor Cycle.

Next, turn the front adjustment knob counterclockwise, slide the handlebar post up or down, and retighten the adjustment knob.



Next, the horizontal position of the handlebar should be adjusted. If the handlebar is too close to the saddle, your breathing may feel restricted. If the handlebar is too far from the saddle, you may experience back discomfort. To adjust the horizontal position of the handlebar, first dismount the Matrix IC3 Indoor Cycle. Check for proper handlebar position by positioning your elbow so that it touches the front tip of the saddle at a 90-degree angle and checking that the fingertip of your middle finger is touching the handlebar at the mid-point. If it is not as described, loosen the fore/aft lever handle and slide the handlebar forward or backward until your middle finger is touching the handlebar at the mid-point. Retighten the lever handle.

The handlebar offers a wide variety of hand positions for personal preferences. Changing your hand position can change the angle of your back, neck, and arms. To minimize the stress on your muscles during your workouts, change your hand position frequently.

ENG ESP

# MATRIX

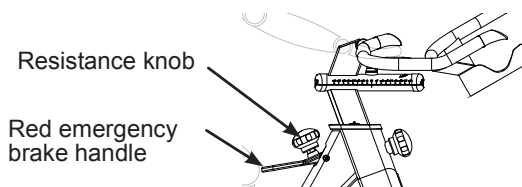
## HOW TO OPERATE THE Matrix IC3 Indoor Cycle

### Resistance adjustment:

The preferred level of difficulty in pedaling (resistance) can be regulated in fine increments by use of the resistance knob. To increase the resistance, turn the resistance knob clockwise. To decrease the resistance, turn the knob counterclockwise.

**IMPORTANT:** To stop the flywheel (wheel) while pedaling, pull up the red emergency handle. The flywheel should quickly come to a complete stop. Please make sure your shoes are fixed into the toe clip or, in case cycling shoes are used, your shoe cleat is connected to the pedal binding while riding.

**! The Matrix IC3 Indoor Cycle does not have a free-moving flywheel (wheel). The pedals will continue to move with the flywheel until the flywheel stops. Reducing speed in a controlled manner is required. To stop the flywheel immediately, pull up the red emergency break handle. Always pedal in a controlled manner and adjust your desired cadence according to your own abilities. Pull the red emergency handle up for emergency stop. !**

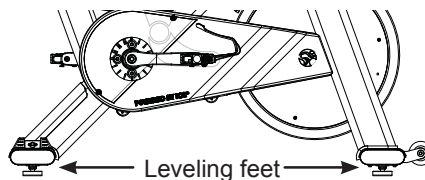


### How to move the Matrix IC3 Indoor Cycle:

Due to the weight of the Matrix IC3 Indoor Cycle, it is recommended that two people move it. While one person lifts the back of the Matrix IC3 Indoor Cycle, the second person firmly holds the handlebar and tips the Matrix IC3 Indoor Cycle forward until it rolls on the wheels. Carefully move the Indoor Cycle to the desired location and then lower it.

**CAUTION:** To reduce the risk of injury, use extreme caution while moving the Indoor Cycle. Do not attempt to move it over uneven surfaces. Make sure to allow a minimum safety space of 20 inches to the nearest equipment.

If the Matrix IC3 Indoor Cycle rocks on the floor after being set down, turn the leveling feet (see diagram) underneath the front or rear stabilizer until the rocking motion is eliminated. **Important:** Please do not unscrew the leveling feet more than 1/2 inch!



# MATRIX

## PREVENTATIVE MAINTENANCE

**Regular maintenance must be performed on the Matrix IC3 Indoor Cycle for optimal performance and longevity. Please read and follow all instructions below. If the indoor cycle is not maintained as described, components may wear excessively and the Matrix IC3 Indoor Cycle may become damaged. Improper maintenance will void the warranty terms. If you have questions about maintenance, contact your local distributor or refer to [www.indoorcycling.com](http://www.indoorcycling.com).**

**Note: Many maintenance procedures require lubricant spray. Manufacturer recommends Brunox or any other solvent-free lubricant.**

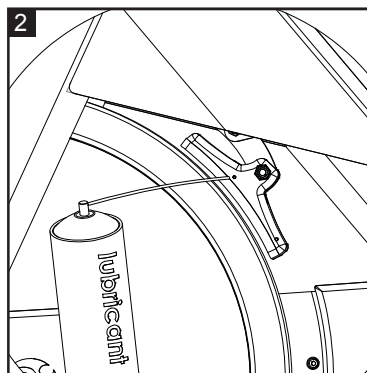
### Daily maintenance:

1. Make sure that the Matrix IC3 Indoor Cycle is level. If the Matrix IC3 Indoor Cycle rocks on your floor, turn the leveling feet underneath the front or rear stabilizer until the rocking motion is eliminated (see „How to move the Matrix IC3 Indoor Cycle“ on page 12).
2. After each user finishes exercising, the Matrix IC3 Indoor Cycle should be disinfected and cleaned to maintain a hygienic environment. First, apply a disinfectant spray to the handlebars and the saddle. Using a lint-free cloth, dry the handlebars and the saddle. Next, apply a small amount of disinfectant to a lint-free cloth and clean the adjustment knobs and the lock handles. Avoid using strong detergents on the Matrix IC3 Indoor Cycle frame.

### Weekly maintenance:

1. Apply a small amount of the lubrication spray to a lint-free cloth. Thoroughly clean the frame, the handlebar slider, the seat sliders, the flywheel, and the plastic parts of the Matrix IC3 Indoor Cycle.

2. For optimal performance of the resistance system, and to minimize wear on the brake pad, the **acid-, silicone- and solvent-free spray lubricant** should be applied to the brake pad using the lubrication holes on the plastic part of the brake pad. If fuzz or lint appears on the brake pad, the brake pad has become too dry. Lubricant spray should be applied more frequently. Make sure brake pad is thoroughly soaked from end to end with lubricant spray. Wipe off any excess.



ENG ESP

# MATRIX

## PREVENTATIVE MAINTENANCE

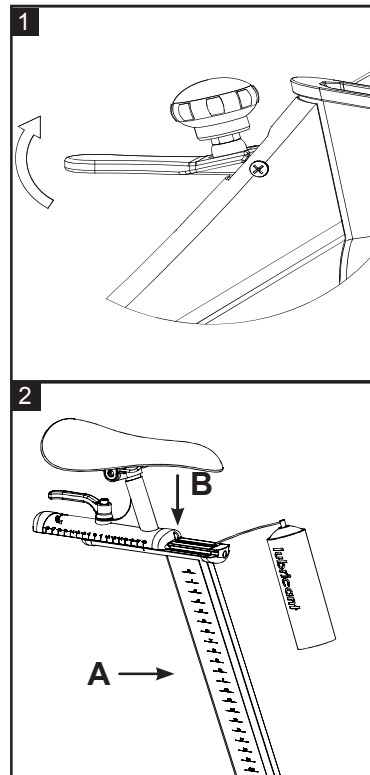
### Bi-weekly maintenance:

1. The Matrix IC3 Indoor Cycle should not be used if the emergency brake system is not working properly.

While sitting on the saddle and pedaling, test the brake by pulling upward on the emergency brake handle. The flywheel should come to a quick and complete stop.

2. To maintain the easy adjustability of the saddle post, the saddle post should be cleaned and lubricated. Turn the rear adjustment knob counterclockwise and slide the saddle post out of the frame. Apply a small amount of lubricant spray to a lint-free cloth, and clean the saddle post (A).

Next, loosen the rear lock handle and slide the saddle carriage as far back as possible. Apply a small amount of lubricant spray to a lint-free cloth, and clean the top of the saddle slide (B). Then slide the saddle carriage as far forward as possible and clean the top of the saddle slide. Finally, adjust the saddle to the desired position.

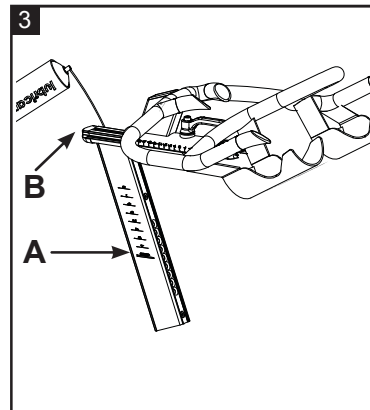


# MATRIX

## PREVENTATIVE MAINTENANCE

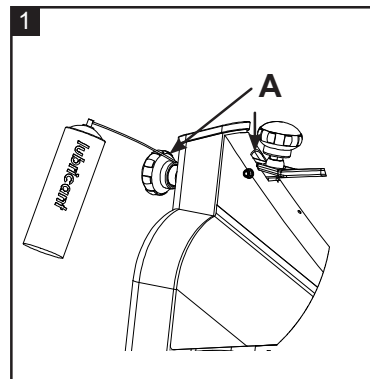
3. To maintain the easy adjustability of the handlebar post, the handlebar post should be cleaned and lubricated. First, turn the front adjustment knob counterclockwise and slide the handlebar post out of the frame. Apply a small amount of lubricant spray to a lint-free cloth, and clean the handlebar post (A).

Next, reinsert the handlebar post into the frame and adjust it to the desired height. Loosen the front lock handle and slide the handlebar carriage as far back as possible. Apply a small amount of lubricant spray to a lint-free cloth, and clean the surface of the handlebar slide (B). Then slide the handlebar carriage as far forward as possible and clean the top of the handlebar slide. Finally, adjust the handlebar to the desired position.



### Monthly maintenance:

1. To maintain the smooth function of the height adjustment knobs for the handlebar and saddle, the metal threads on the adjustment knobs (A) must be lubricated. Use of white lithium grease is recommended.

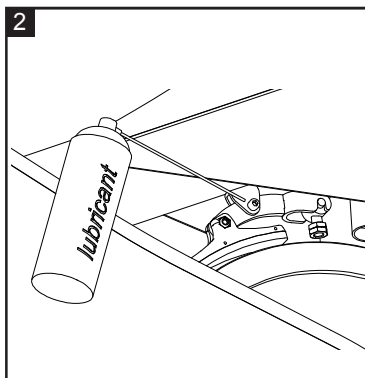


ENG ESP

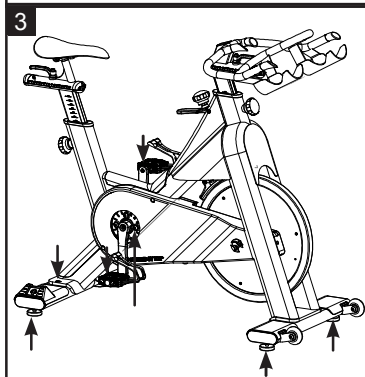
# MATRIX

## PREVENTATIVE MAINTENANCE

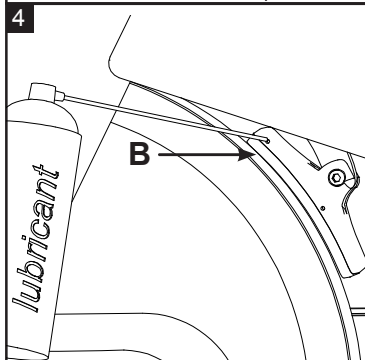
2. To maintain the easy adjustability of the resistance system, the threads on the lower end of the brake rod should be lubricated. First, turn the resistance knob clockwise until it stops. Next, look under the right or left side of the frame and locate the brake rod, which has two lock nuts on its lower end. Apply a small amount of synthetic grease (white lithium grease) to the threads on the brake rod above the two lock nuts. Turn the resistance knob counterclockwise until it stops.



3. Some parts of the Matrix IC3 Indoor Cycle may become loose as a result of repeated use. Check pedals, toe clips and pedal straps, and make sure that they are properly tightened. Next, check all exposed screws, bolts, and nuts. Make sure that they are properly tightened. Finally, check the saddle to make sure that it is not loose or damaged. Please use Locktite on loose crank arm and pulley screws.



4. The brake pad will become worn as a result of repeated use. The Matrix IC3 Indoor Cycle should not be used if the emergency brake system is not working properly (see page 14)! Should you feel that the resistance system's functions are deficient, it is essential to fine-tune the resistance system before the bike is used again! Please check the setting of the brake system as follows: First turn the resistance regulator on the brake system as far as it will go to the left (minimum braking effect). If the setting is correct, the brake pads should be flush with the flywheel and barely touching so that it is possible to cycle with a barely noticeable amount of resistance. The brake pad can be adjusted using a 10 mm wrench. Next, check the brake pad for signs of wear. If the brake pad does show signs of excessive wear, thoroughly soak the brake pad with lubricant spray using the 2 lubrication holes (B). Wipe off the excess.





# MATRIX

## MAINTENANCE ACTIVITY AND REQUIRED SCHEDULE

Activity	Rotation	Details found on
Feet leveling, disinfection and cleaning of the bike	daily	page 13
Servicing brake pads, detailed cleaning of the entire bike	weekly	page 13
Check emergency brake function	bi-weekly	page 14+16
Clean and lubricate saddle and handlebar sliders / posts	bi-weekly	page 14-15
Check adjustment knobs	monthly	page 15
Check brake pad for signs of wear	monthly	page 13
Check brake system, lubricate	monthly	page 16
Check pedals, toe clip and straps for signs of wear	monthly	page 16
Check to ensure connections and components are secure & correctly tightened	monthly	page 16

Examples of maintenance plan charts for in-house service technicians:

Weekly maintenance Checklist					
Bike No.	Production code	Observations	Action taken	Result	Name / date

ENG ESP

# MATRIX

## MAINTENANCE ACTIVITY AND REQUIRED SCHEDULE

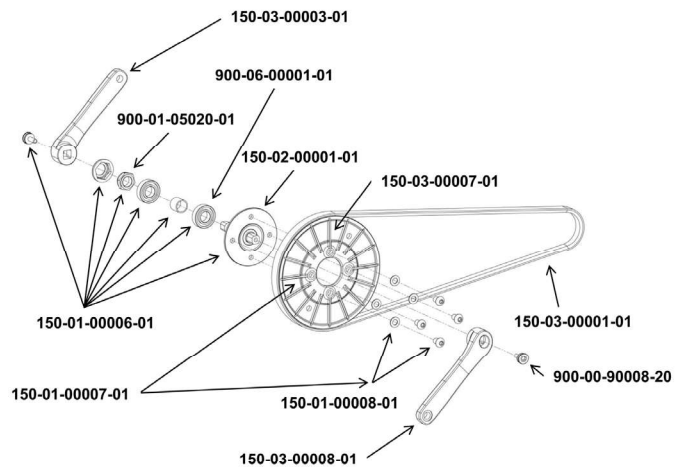
Bi-Weekly maintenance Checklist					
Bike No.	Production code	Observations	Action Taken	Result	Name / date

Monthly maintenance Checklist					
Bike No.	Production code	Observations	Action Taken	Result	Name / date

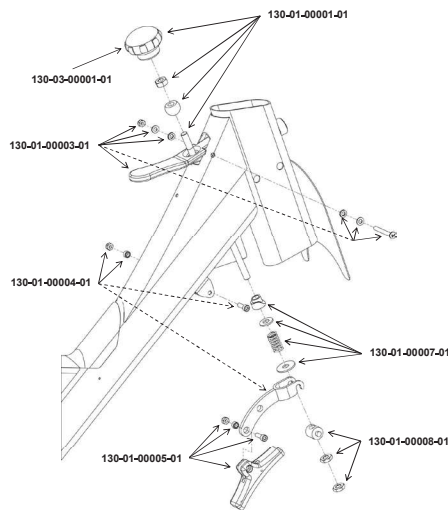
# MATRIX

## SPARE PARTS

### Drive Gear Parts



### Brake parts

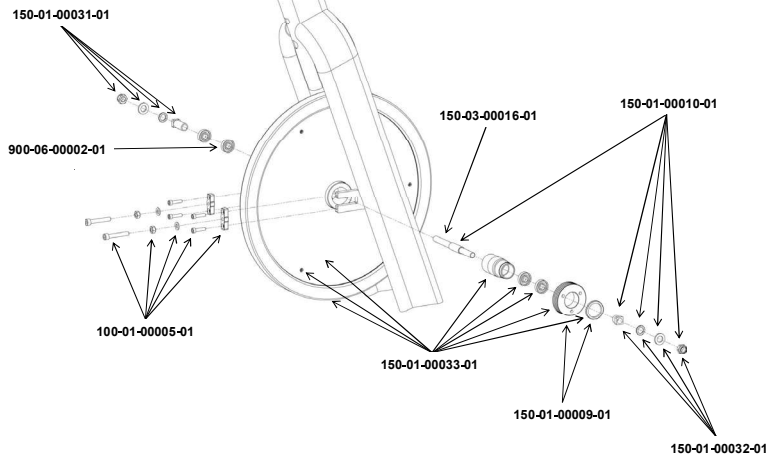


ENG ESP

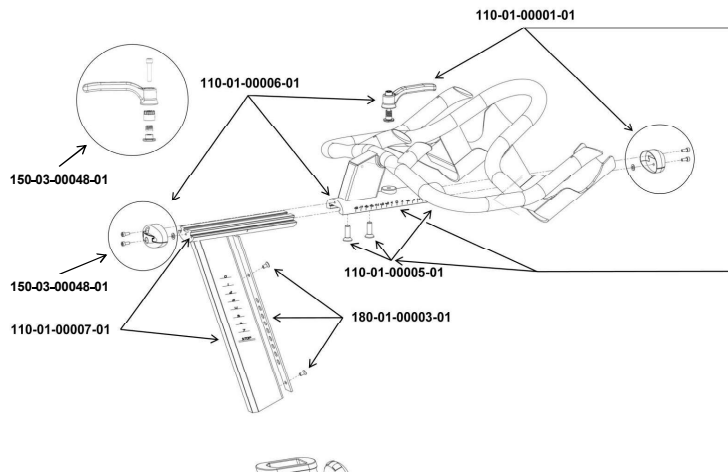
# MATRIX

## SPARE PARTS

### Flywheel



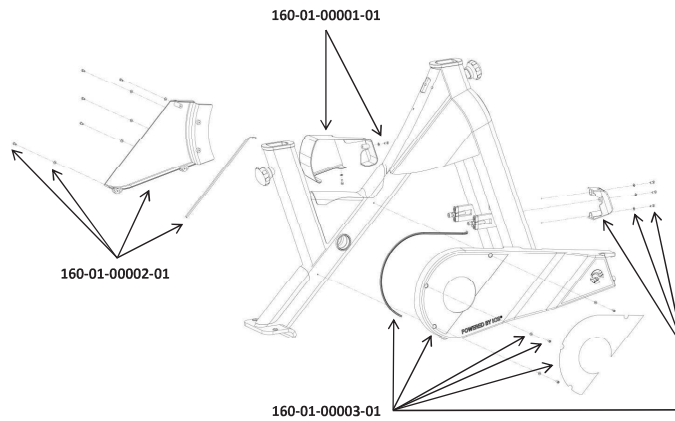
### Handlebar



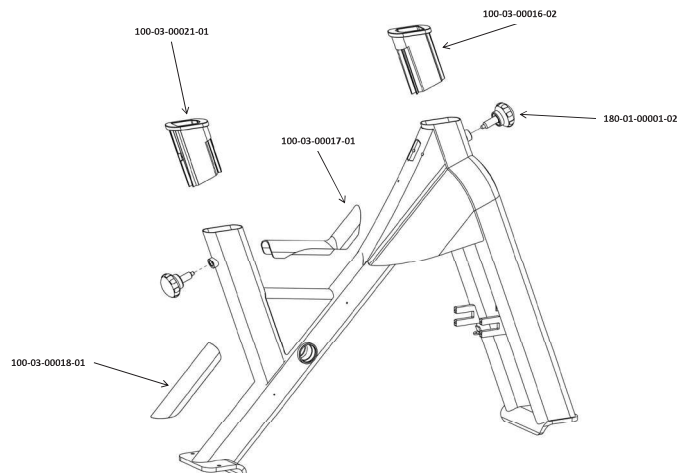
# MATRIX

## SPARE PARTS

### Chain Guard



### Frame

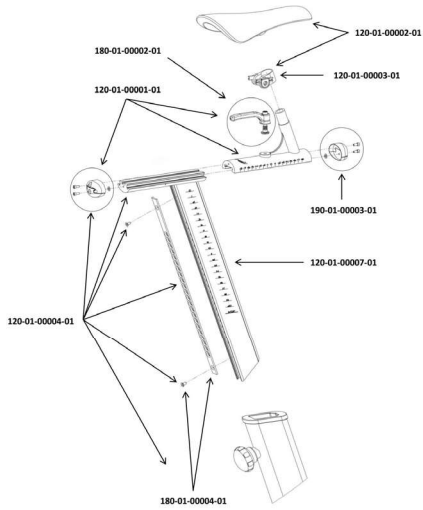


ENG ESP

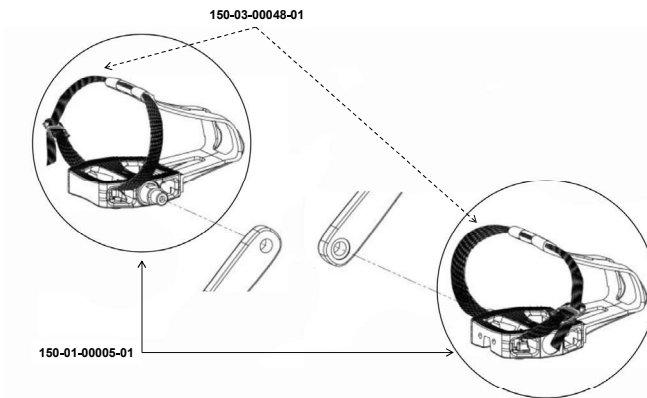
# MATRIX

## SPARE PARTS

### Saddle Support

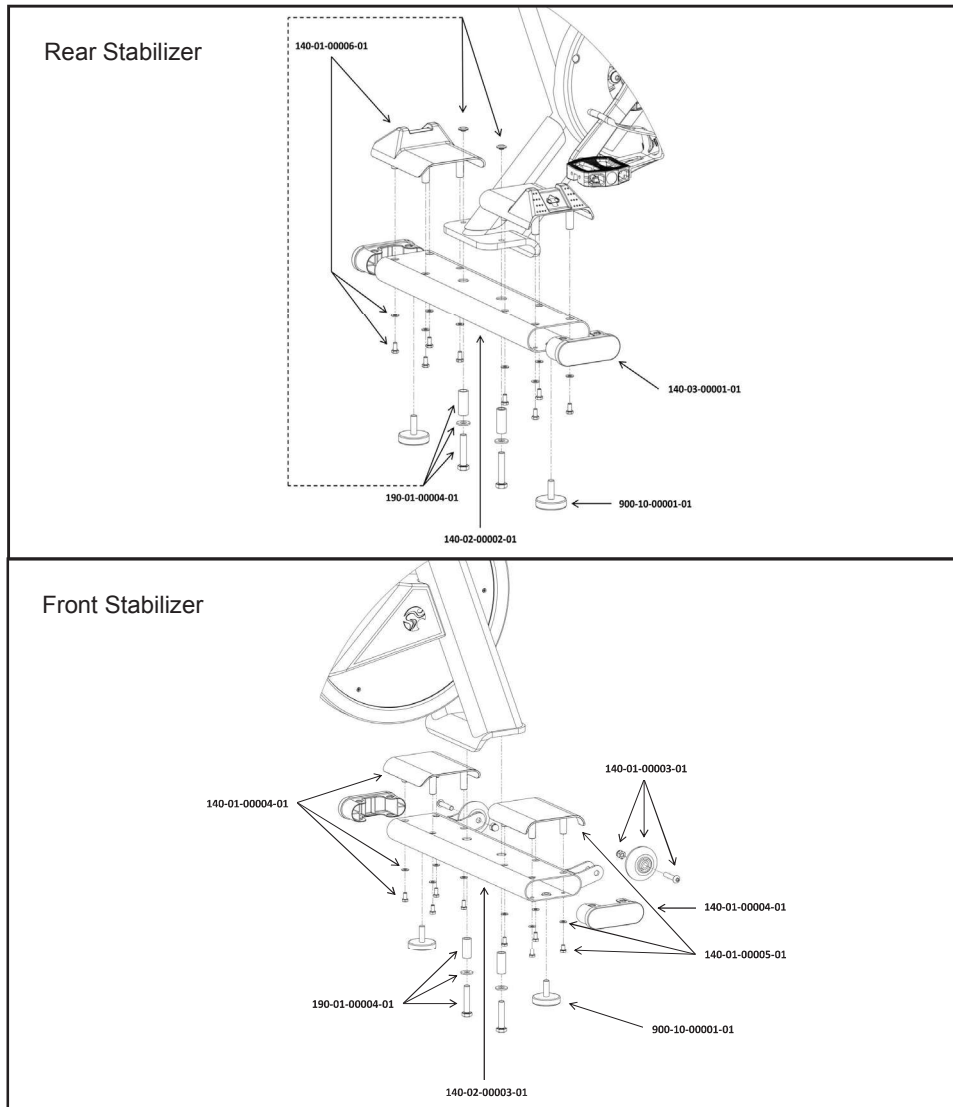


### Pedals



# MATRIX

## SPARE PARTS



ENG ESP

# MATRIX

	Spare Part No.	Description
Brake	130-01-00001-01	<b>UPPER BRAKE ROD ASSEMBLY:</b> BRAKE ADJUSTMENT KNOB 1x NUT, M10 x 1.5P, ss304 STAINLESS STEEL, DIN934/ ISO4032 1x BRAKE ROD 1x ADJUSTMENT BALL 1x
	130-03-00001-01	<b>BRAKE ADJUSTMENT KNOB</b>
	130-01-00007-01	<b>LOWER BRAKE KIT:</b> BRAKE ROD FRAME FITTING 1x WASHER, 22mm x 10mm x 2mm, ss304 STAINLESS STEEL, DIN125 / ISO 7090 1x COMPRESSION SPRING, 16mm x 30mm x 1.5mm, LOWER BRAKE ROD 1x WASHER, 30mm x 10.5mm x 2mm, ss 304 STAINLESS STEEL, DIN9021 / ISO 7093 1x
	130-01-00008-01	<b>BRAKE ADJUSTMENT DRUM KIT:</b> ADJUSTMENT DRUM 1x FLAT NUT, M10 x 0.75P, ss304 STAINLESS STEEL, DIN439/ ISO4035 2x
	130-01-00003-01	<b>EMERGENCY BRAKE HANDLE KIT:</b> EMERGENCY Brake HANDLE 1x SELF LOCKING NUT, M6 x 1.0P, ss304 STAINLESS STEEL, DIN985/ ISO7040 1x WASHER, 12mm x 6,4mm x 1,6mm, ss304 STAINLESS STEEL, DIN125/ ISO7090 2x WASHER, 12mm x 6,4mm x 1,6mm, NYLON, DIN125/ ISO7090 2x PHILIPS HEAD MACHINE SCREW, M6 x 55 x 1.0P, ss304 STAINLESS STEEL, DIN7985H/ ISO7045 1x
	130-01-00004-01	<b>BELL CRANK KIT - LOWER BRAKE YOKE:</b> BELL CRANK 1x SPACER, 6.1mm x 10.2mm x 10mm 1x HEX SOCKET HEAD BOLT, M6 x20 x 1.0P, ss304 STAINLESS STEEL, DIN912/ ISO4762 1x SELF LOCKING NUT, M6 x 1.0P, #ss304 STAINLESS STEEL, DIN985/ ISO7040 1x
	130-01-00005-01	<b>BRAKE PAD Kit:</b> SPACER, 6.1mm x 10.2mm x 10mm 1x HEX SOCKET HEAD BOLT, M6 x20 x 1.0P, ss304 STAINLESS STEEL, DIN912/ ISO4762 1x SELF LOCKING NUT, M6 x 1.0P, #ss304 STAINLESS STEEL, DIN985/ ISO7040 1x BRAKE PAD ASSEMBLY 1x
Chain Guard	160-01-00001-01	<b>LEFT SIDE FW HUB COVER KIT:</b> LEFT SIDE FW HUB COVER 1x ALLEN BOLT, M4 x10 x 0.7P, ss304 STAINLESS STEEL, DIN912/ ISO4762 2x
	160-01-00002-01	<b>INNER CHAIN GUARD KIT:</b> „INNER CHAIN GUARD 1x RUBBER GASKET INNER CHAIN GUARD 1x ALLEN BOLT, M4 x10 x 0.7P, ss304 STAINLESS STEEL, DIN912/ ISO4762 5x“



# MATRIX

	Spare Part No.	Description
Chain Guard	160-01-00003-01	<b>OUTER CHAIN GUARD KIT:</b> RUBBER GASKET OUTER CHAIN GUARD 1x OUTER CHAIN GUARD 1x OUTER CHAIN GUARD DECAL 1x OUTER CHAIN GUARD FRONT COVER 1x ALLEN BOLT, M4 x10 x 0.7P, ss304 STAINLESS STEEL, DIN912/ ISO4762 6x
Drive Gear	150-03-00003-01	Left Crank Arm, Red
	150-03-00008-01	Right Crank Arm, Red
	150-01-00006-01	<b>BOTTOM BRACKET KIT:</b> Crank Mounting Bolt; M8x20x1,25P 2x Rubber Cover For M20 Locking Nut 1x LOCKING NUT, M20 x 1.0P, 8.9 Steel, DIN982/ISO10512 1x BB BEARING DISTANCE SPACER, 24mm x 20mm x 12mm 1x BALL BEARING, 6004 2z, 42mm x 20mm x 12mm 2x BOTTOM BRACKET SPINDLE 1x
	900-00-90008-20	Crank Mounting Bolt; M8x20x1,25P
	900-01-05020-01	LOCKING NUT, M20 x 1.0P, 8.9 STEEL, DIN982/ISO10512
	900-06-00001-01	BALL BEARING, 6004 2z, 42mm x 20mm x 12mm
	150-02-00001-01	BOTTOM BRACKET SPINDLE
	150-01-00008-01	<b>CRANK PULLEY MOUNTING SET:</b> WASHER, 10.5mm x 20mm x 1.5mm, ss304 STAINLESS STEEL, DIN 125 /ISO 7089 4x BOTTON HEAD BOLT, HEX SOCKET, M10 x 20 x 1.5P, ss304 Stainless Steel, DIN7346/ ISO738 4x
	150-01-00007-01	<b>CRANK PULLEY KIT FOR V-BELT DRIVE:</b> WASHER, 22mm x 10mm x 2.0mm, ss304 STAINLESS STEEL, DIN125 / ISO 7089 4x BUTTON HEAD BOLT, HEX SOCKET, M10 x 20 x 1.5P, ss304 STAIN- LESS STEEL, DIN 7346 / ISO 7380 4x PL4 CRANK PULLEY 1x
	150-03-00007-01	PL4 CRANK PULLEY
	150-03-00001-01	Poly V Belt PL4 1397
Flywheel	900-06-00002-01	BALL BEARING, 6001 2z, 28mm x 12mm x 8mm
	150-01-00010-01	<b>FLYWHEEL AXLE ASSEMBLY:</b> FLYWHEEL AXLE 1x SELF LOCKING NUT, M12 x 1.0P, STEEL, DIN985/ ISO10511 2x WASHER, 24mm x 13mm x 2.5mm, STEEL, DIN125 / ISO 7089 2x SERRATED LOCK WASHER, 20.5mm x 12.5mm x 1.0mm, STEEL, DIN6798 2x FW AXLE DISTANCE SLEEVE, LEFT SIDE (39mm) 1x FW AXLE DISTANCE SLEEVE, RIGHT SIDE (17mm) 1x
	150-03-00016-01	FLYWHEEL AXLE

ENG ESP

# MATRIX

	Spare Part No.	Description
Flywheel	150-01-00033-01	<b>FW WHEEL ASSEMBLY FOR V-BELT DRIVE:</b> FW HUB 1x SELF TAPPING SCREW 4 x 12mm, STEEL, DIN EN ISO 6x BALL BEARING, 6001 2z, 28mm x 12mm x 8mm 4x FW PLASTIC COVER LEFT AND RIGHT 2x FW PULLEY LOCK RING 1x POLY V PL4 FW HUB PULLEY 1x FW COVER DECAL SET 1x FLYWHEEL 1x
	150-01-00031-01	<b>FLYWHEEL MOUNTING KIT LEFT:</b> SELF LOCKING NUT, M12 x 1.0P, STEEL, DIN985/ ISO10511 1x WASHER, 24mm x 13mm x 2.5mm, STEEL, DIN125 / ISO 7089 1x SERRATED LOCK WASHER, 20.5mm x 12.5mm x 1.0mm, STEEL, DIN6798 1x FW AXLE DISTANCE SLEEVE, LEFT SIDE (39mm) 1x
	150-01-00032-01	<b>FLYWHEEL MOUNTING KIT RIGHT:</b> SELF LOCKING NUT, M12 x 1.0P, STEEL, DIN985/ ISO10511 1x WASHER, 24mm x 13mm x 2.5mm, STEEL, DIN125 / ISO 7089 1x SERRATED LOCK WASHER, 20.5mm x 12.5mm x 1.0mm, STEEL, DIN6798 1x FW AXLE DISTANCE SLEEVE, RIGHT SIDE (17mm) 1x
	100-01-00005-01	<b>FW BRACKET ADJUSTMENT KIT:</b> ALLEN BOLT, M8 x 50 x 1.25P, 8.8 STEEL, DIN912/ISO4762 1x NUT, M8 x 1.25P, 8.8 STEEL, DIN934/ ISO4032 1x BOTTOM HEAD BOLT, M6 x 16 x 1.0P, STEEL, DIN7346/ ISO7380 2x LOCKING PLATE FOR FW BRACKET 1x
	150-01-00009-01	<b>FRONT PULLEY ASSEMBLY FOR V-BELT DRIVE:</b> FL PULLEY LOCK RING 1x POLY V PL4 FW HUB PULLEY 1x
Frame	100-03-00016-02	<b>INLAY SLEEVE HB TUBE</b>
	100-03-00017-01	<b>PROTECTION COVER - BB TRIANGLE</b>
	100-03-00018-01	<b>PROTECTION COVER - REAR LATERAL FRAME TUBE</b>
	100-03-00021-01	<b>INLAY SLEEVE SEATPOST TUBE</b>
	100-09-00010-01	<b>MX FRAME DECAL SET IC3:</b> DECAL - WARNING LABEL 1x DECAL MX - FRONT FORK BADGE 2x DECAL TRIBAL - FRONT COVER - TRANSFER BADGE 1x DECAL IC3 - SEAT POST TUBE - ALUMINIUM BADGE (LEFT) 1x DECAL IC3 - SEAT POST TUBE - ALUMINIUM BADGE (RIGHT) 1x
	100-09-00003-01	<b>DECAL TRIBAL - FRONT COVER - TRANSFER BADGE</b>
	180-01-00001-02	<b>POP PIN ADJUSTMENT KNOB</b>

# MATRIX

	Spare Part No.	Description
Handle Bar	110-01-00001-01	<b>UPPER HANDLEBAR ASSEMBLY</b> UPPER HANDLEBAR WELDMENT 1x COUNTER SUNK HEX SOCKET BOLT, M8 x 25 x 1.0P, 9.8 STEEL, DIN7991/ ISO10642 2x ADJUSTMENT LEVER ASSEMBLY 1x HB SLIDER WELDMENT 1x PLASTIC END CAP UPPER HB + SB SLIDER 2x ALLEN BOLT, M4 x10 x 0.7P, ss304 STAINLESS STEEL, DIN912/ ISO4762 2x
	110-01-00005-01	<b>UPPER HANDLEBAR KIT:</b> UPPER HANDLEBAR WELDMENT 1x COUNTER SUNK HEX SOCKET BOLT, M8 x 25 x 1.0P, 9.8 STEEL, DIN7991/ ISO10642 2x
	110-01-00006-01	<b>Upper HB SLIDER ASSEMBLY:</b> ADJUSTMENT LEVER ASSEMBLY 1x HB SLIDER WELDMENT 1x PLASTIC END CAP UPPER HB + SP SLIDER 2x ALLEN BOLT, M4 x10 x 0.7P, ss304 STAINLESS STEEL, DIN912/ ISO4762 2x
	110-01-00007-01	<b>HB STEM ASSEMBLY:</b> Plastic Glider 2x HB Stem Weldment 1x
	180-01-00003-01	<b>PROTECTION INSERT KIT, VERTICAL HB STEM:</b> PROTECTION INSERT, VERTICAL HB STEM 1x COUNTER SUNK HEX SOCKET, M5 x 10 x 0.8P, ss304 STAINLESS STEEL, DIN7991/ ISO10642 2x
	180-01-00002-01	<b>ADJUSTMENT LEVER ASSEMBLY</b>
	190-01-00003-01	<b>PLASTIC END CAP KIT FOR HORIZONTAL HB + SP SLIDER:</b> PLASTIC END CAP UPPER HB + SP SLIDER 1x WASHER, 5.3mm x 10mm x 1.0mm, ss304 STAINLESS STEEL, DIN 125 / ISO 7090 1x PLASTIC END CAP LOWER HB + SP SLIDER 1x ALLEN BOLT, M4 x10 x 0.7P, ss304 STAINLESS STEEL, DIN912/ ISO4762 2x
Seat Post	120-01-00007-01	<b>SEAT POST STEM ASSEMBLY:</b> Plastic Glider 2x SP Stem Weldment 1x
	180-01-00002-01	<b>ADJUSTMENT LEVER ASSEMBLY</b>
	190-01-00003-01	<b>PLASTIC END CAP KIT FOR HORIZONTAL HB + SP SLIDER:</b> PLASTIC END CAP UPPER HB + SP SLIDER 1x WASHER, 5.3mm x 10mm x 1.0mm, ss304 STAINLESS STEEL, DIN 125 / ISO 7090 1x PLASTIC END CAP LOWER HB + SP SLIDER 1x ALLEN BOLT, M4 x10 x 0.7P, ss304 STAINLESS STEEL, DIN912/ ISO4762 2x
	120-01-00002-01	<b>SADDLE INCL. SADDLE CLAMP , VELO NR: VL-3125SW:</b> SADDLE 1x SADDLE CLAMP 1x
	120-01-00003-01	<b>SADDLE CLAMP</b>

ENG ESP

# MATRIX

	Spare Part No.	Description
Seat Post	120-01-00001-01	<b>SP SLIDER ASSEMBLY:</b> SP SLIDER WELDMENT 1x ADJUSTMENT LEVER ASSEMBLY 1x PLASTIC END CAP UPPER HB + SP SLIDER 2x ALLEN BOLT, M4 x10 x 0.7P, ss304 STAINLESS STEEL, DIN912/ ISO4762 2x
	120-01-00004-01	<b>SEATPOST ASSEMBLY:</b> ALLEN BOLT, M4 x10 x 0.7P, ss304 STAINLESS STEEL, DIN912/ ISO4762 2x WASHER, 5.3mm x 10mm x 1.0mm, ss304 STAINLESS STEEL, DIN 125 / ISO 7090 2x PLASTIC END CAP LOWER HB + SP SLIDER 2x COUNTER SUNK HEX SOCKET, M5 x 10 x 0.8P, ss304 STAINLESS STEEL, DIN7991/ ISO10642 2x
Stabilizer	190-01-00004-01	<b>STABILIZER MOUNTING KIT:</b> HEX HEAD BOLT M10 x 50 x 1.0P, ss304 STAINLESS STEEL, DIN933 / ISO4017 1x WASHER, 22mm x 10.5mm x 2.0mm, ss304 STAINLESS STEEL, DIN125/ ISO7089 1x DISTANCE SLEEVE, 11.9mm x 15.9mm x 38mm, blk oxide steel 1x PLASTIC POP OUT - STABILIZER MOUNTING BRACKET 1x
	140-03-00001-01	<b>STABILIZER END CAP</b>
	900-10-00001-01	<b>LEVELLING FEET, RUBBER</b>
	140-01-00006-01	<b>REAR STABILIZER STRETCH PLATE KIT:</b> WASHER, 12mm x 6.4mm x 1.6mm, BLK OXIDE STEEL, DIN125/ ISO7090 4x HEX HEAD BOLT, M6 x 12 x 1.0P, BLK OXIDE STEEL, DIN933 / ISO4017 4x REAR STABILIZER STRETCH PLATE 1x
	140-02-00002-01	<b>REAR STABILIZER WELDMENT</b>
	140-01-00004-01	<b>FRONT STABILIZER PROTECTION PLATE KIT, LEFT:</b> WASHER, 12mm x 6.4mm x 1.6mm, BLK OXIDE STEEL, DIN125/ ISO7090 4x HEX HEAD BOLT, M6 x 12 x 1.0P, BLK OXIDE STEEL, DIN933 / ISO4017 4x FRONT STABILIZER PROTECTION PLATE, LEFT 1x
	140-01-00005-01	<b>FRONT STABILIZER PROTECTION PLATE KIT, RIGHT:</b> WASHER, 12mm x 6.4mm x 1.6mm, BLK OXIDE STEEL, DIN125/ ISO7090 4x HEX HEAD BOLT, M6 x 12 x 1.0P, BLK OXIDE STEEL, DIN933 / ISO4017 4x FRONT STABILIZER PROTECTION PLATE, RIGHT 1x
	140-02-00003-01	<b>FRONT STABILIZER WELDMENT</b>
	140-01-00003-01	<b>TRANSPORTATION WHEEL ASSEMBLY:</b> BUTTON HEAD SLEEVE WITH INTERNAL THREAD, HEX SOCKET, M8 x35 x 1.5P, ss304 STAINLESS STEEL 1x BUTTON HEAD BOLT, HEX SOCKET, M8 x12 x 1.5P, ss304 STAIN- LESS STEEL, ISO7380 1x TRANSPORT WHEEL 1x

# MATRIX

## WARRANTY TERMS

Matrix Fitness System Corp. warrants that all new equipment will be free of manufacturing defects in workmanship and materials, effective on the date of original installation. Parts repaired or replaced under the terms of this warranty will be warranted for the remainder of the original warranty period only. **Warranty may vary by region or country.** Please contact [www.matrixfitness.com](http://www.matrixfitness.com).

**Defects caused by inappropriate use or handling of the product may cause denegation of the manufacturer warranty.**

### LIMITED WARRANTY Matrix IC3

- |                          |  |
|--------------------------|--|
| <b>10-year warranty:</b> | Frame construction and welding   |
| <b>3-year warranty :</b> | Handlebar and saddle assembly, brake system (excluding brake pad), lever handles and knobs, cranks, belt drive system, bottom bracket assembly, flywheel and hub assembly, powder coating. |
| <b>2-year warranty :</b> | Pedals, insert sleeves for handle bar and saddle post, leveling feet.  |
| <b>1-year warranty:</b>  | Saddle construction  |

**The following wear items are excluded from warranty:**  
Pedal straps, pedal binding system, brake pad, saddle surface

ENG ESP